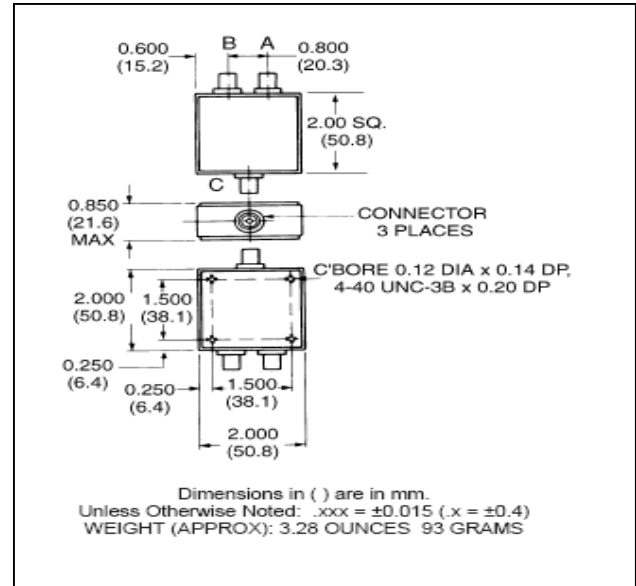


Features

- Internally Terminated Fourth Port
- Amplitude Balance 0.4 dB
- Impedance: 50 Ohms Nom.
- Input Power: 250 mW. Max.
- MIL-STD_202 Screening Available

C-13

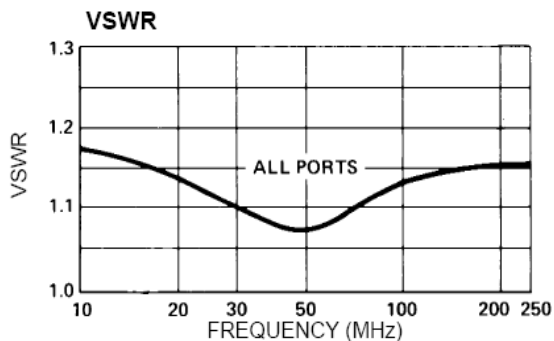
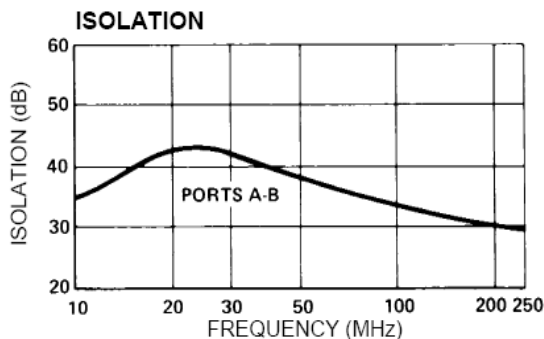
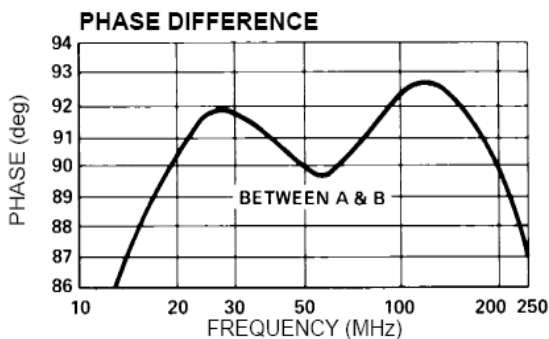
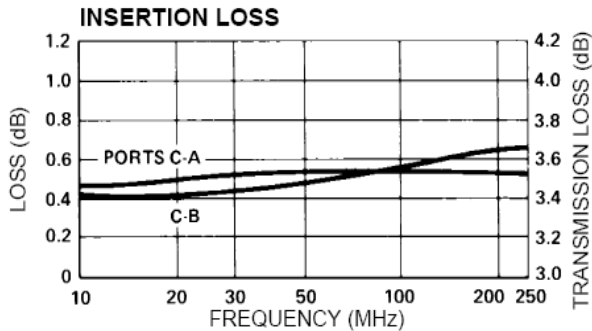


Guaranteed Specifications*: From -55°C to +85°C

Frequency Range	20 - 200 MHz
Insertion Loss (less coupling)	1.0 dB Max
Isolation	20 dB Min
Amplitude Balance	0.4 dB Max.
VSWR (All Ports)	1.4:1 Max
Deviation From Quadrature	6° Max.

* All specifications apply with 50 Ohm source and load impedance.

Typical Performance Curves



Ordering Information

Part Number	Package
JH-131 BNC	Connectorized
JH-131 SMA	Connectorized
JH-131 TNC	Connectorized
JH-131 N	Connectorized

Phasing Diagram

